

Since 1985, Sanco Services has been expertly installing quality, name-brand parts remotely, coming to their customers wherever they may be. In addition, Sanco Services is dedicated to delivering:

- **Nationwide service.** The Sanco Services team of highly-skilled professionals take pride in the quality of service they deliver to businesses just like yours.
- **Experience.** The Sanco Services team have an impressive 60 years of collective experience in the industry. That means you can trust them to do the job right the first time.
- **High standards.** Sanco Services' Midwestern values and work ethic shines through in the teams' attention to detail, consistently superior performance, and the quality of name brand parts and installation.
- **Hard work.** They are a hard-working team, committed to delivering nothing less than the best possible service for their customers, always in a timely and efficient manner.

The Road to Return on Investment (ROI)

Sanco Services was built on a foundation of cost-effectiveness and efficiency. Knowing that businesses whose success rides on the productivity and performance of their commercial vehicles, Sanco Services recognized from the start that for their customers, the road to ROI begins at the customers' location. Unlike any other installer in the industry, Sanco Services consistently delivers to their customers' bottom line.

Sanco Services Directory

Office: 507.377.1754

Beau Montgomery
Business Development Manager

Cell: 651.238.2432

beaum@sancoent.com

Denny Arendt
Field Manager

Cell: 507.402.5528

dennya@sancoservices.net

Lacey Pagel
Logistics Coordinator

Phone: 507.377.1754#217

lpagel@sancoservices.net

LOGISTICS

Let Us Help You Find a Solution

Sanco Services offers planning to help your business grow and meet its ever-changing demands. We provide a wide range of solutions to keep you and your employees, your cargo, and your warehouse products safe, comfortable and stable. Let us help you in the transportation, warehouse, fleet, and assets business.

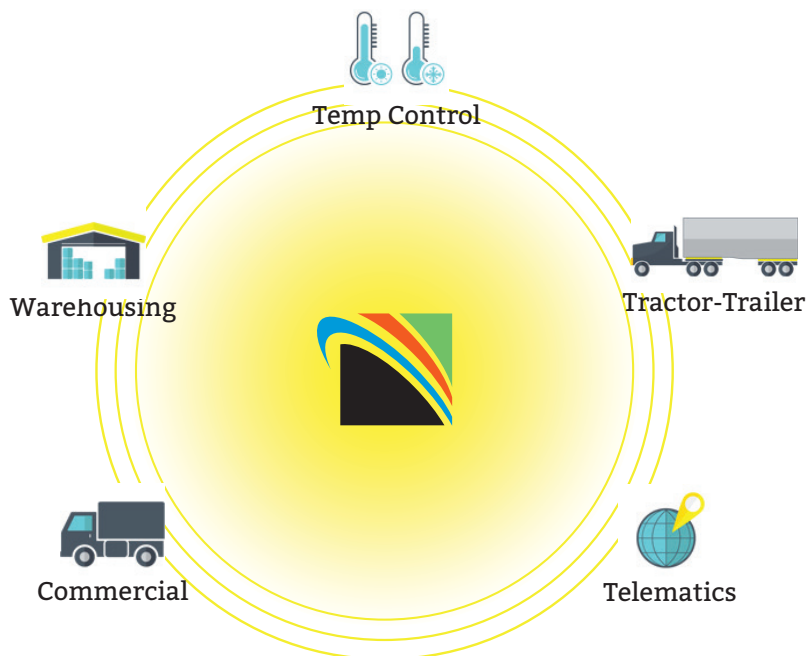
We can also assist you with:

- Start to finish logistics
- Warehouse temperature control
- Warehouse temperature differentiation
- Fleet upfitting
- Asset tracking systems
- Brand recognition and decaling

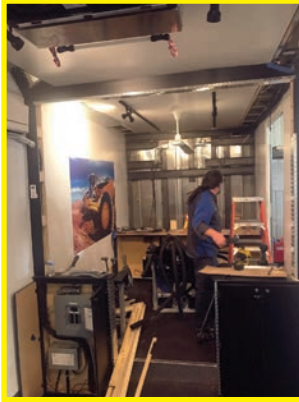
lo·gis·tics

noun

The detailed organization and implementation of a complex operation. In a general business sense, logistics is the management of the flow of things between the point of origin and the point of consumption in order to meet requirements of customers or corporations.



CUSTOM SPECIALTY PROJECTS



49ers Simulation Training Trailer

- Awning
- Strip Curtains
- Full HVAC System



Prepackaged Food Distribution Van



- Custom Refrigeration

Mobile Trauma Center



- Installed Auxiliary Power Unit



Fresh and Frozen Food Delivery



- Box Transfer



Catering Van

- Custom Multi-Temp Kit
- Dry Storage Area
- Insulated Cold Storage



ISO TEMP



Pharmaceutical



Delivery



Catering

A New Line of Fully Integrated Cargo Isolation Systems



Product Benefits

- + Modular designed and produced to meet or exceed global automotive standards
- + Seamless insulated panels featuring one-piece impermeable flooring
- + High thermal efficiency and sealing to ensure full cargo isolation
- + Up to three separate temperature controlled environments

ISO VAN
by Gruau

 Fresh to Frozen

Available on these vehicles:



Ford Transit



Mercedes-Benz Sprinter



Ram ProMaster



*Ford Transit Connect



*Mercedes-Benz Metris



*Nissan NV200

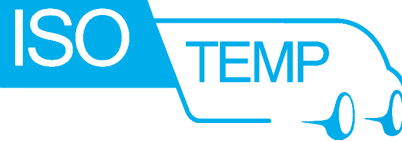


*Chevrolet City Express



*Ram ProMaster City

Fully Integrated Cargo Isolation Systems



Customizable with up to 3 separate temperature controlled environments from -5°F to 60°F

Ideal for applications including:

- Food Delivery
- Biomedical Transport
- Catering



*ATP & HACCP Certified

Some Available Options



Raised Platform



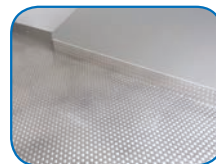
Clear PVC Strip Curtains



Stainless Steel Doorstep Protection



Aluminum Fold-down Shelves



Anti-slip Aluminum Floor Protectant



E-Track



Frozen Application Extra Side Door



Reefer Roof Recess Kit

COOL-R KIT

Give Your Customers a COOL-R Experience!

Fuel prices, food safety, driver turnover and regulations create an environment where cost analysis is crucial. Drive up quality, customer satisfaction, and profits with an insulated van. The COOL-R kit from FG Products is the premier Van Insulation Package. Designed in Kit form, the COOL-R represents 50 years of custom composite molding experience specific to perishable distribution.

Hot Shot Delivery - Home/Business Delivery - Sales/Demonstration Vehicle - Specialty Distribution
Catering - Seafood - Floral - Produce - Medical - Beverage and Snack Foods



COOL-R Design & Features

- Injected urethane foam panels. Custom molded to the contours of the van.
- HACCP friendly USDA approved gelcoat surfaces. Chemical and steam-clean safe.
- Aluminum and diamond plate trim.
- Super strong polyester resin/aluminum oxide non-slip grit floor.
- Ultra-bright LED moisture sealed lighting package complete with marine grade 3-way switch.

COOL-R Advantages

- Excellent thermal values. The COOL-R is rated to 0°F at 100°F ambient to handle frozen applications. Additional insulation can be added to increase performance.
- Ships on one pallet to the installer. Ship the insulation package, not the van!
- Easy Installation for a fast turn around time. The kit includes everything you need for a seamless experience.
- Removable/replaceable components. Simplify repair and improve re-sale market options.
- The COOL-R's internal reinforcements minimize BTU transfer. Logistic track can also be attached for load securement.
- The COOL-R will accommodate most refrigeration units to fit your distribution requirements.

Product Options

- Turn your van into a multi-temp vehicle with the optional Re-Flex® insulated bulkhead. Secure it to the optional aluminum logistic rack.
- Optional floor drain makes clean out even easier.



Over 50 years of industry experience!



Fresh to Frozen

Available for: Ford Transit, RAM Promaster, Mercedes/Dodge/Freightliner Sprinter



Insulated VanLiners

Maintaining the integrity of the 'Cold-Chain'

Insulating your fleet of delivery vans with Vanco VanLiners, illustrates your desire for product safety and avoids the otherwise substantial risk of contamination and mishandling of perishables. Vanco VanLiners deliver high grade performance with technology solutions that maintain maximum refrigeration, keeping running costs surprisingly low.

Our Liners have a proprietary design, which double seals our insulation materials, maximizing performance. This concept guarantees zero moisture and consistent insulation ratings. The result is reliable temperatures and the avoidance of moisture and bad odors that are common in other types of refrigerated liners.

Temperature Management

The design of Vanco VanLiners and the high quality of the materials we use in their production, maximizes the "R" rating which results in exceptional temperature control under all climates. We test our units in the height of the Arizona summer (115F). They perform here, so you can be sure that they will perform everywhere else



Floral - Cakes - Sandwiches - Confectionery - Fine Wines - Gift Baskets - Bakery - Meats - Fish



Features:

- USDA & FDA Compliant
- Overlapping panels guarantee that moisture, dirt, bacteria or anything else cannot penetrate them.
- More great quality perishable products delivered. Minimize shrink and waste. Avoid the deterioration of your perishables thus eliminating claims.
- Time and wages. You do not need heavy truck drivers with their high costs. Your drivers will complete more deliveries during their shifts, as these vans allow for quick, economical drop offs, going in and out of loading and delivery docks.
- Higher insulation factor extends the life of your refrigeration unit and lowers your maintenance and fuel cost. Vanco VanLiners enables your compressor to work less under the same conditions with less load on your engine, translating into better fuel efficiency.
- Reliably maintains target temperatures all year round.
- Eliminates condensation and humidity leaks to the chassis, minimizing corrosion and extending the life of your van.



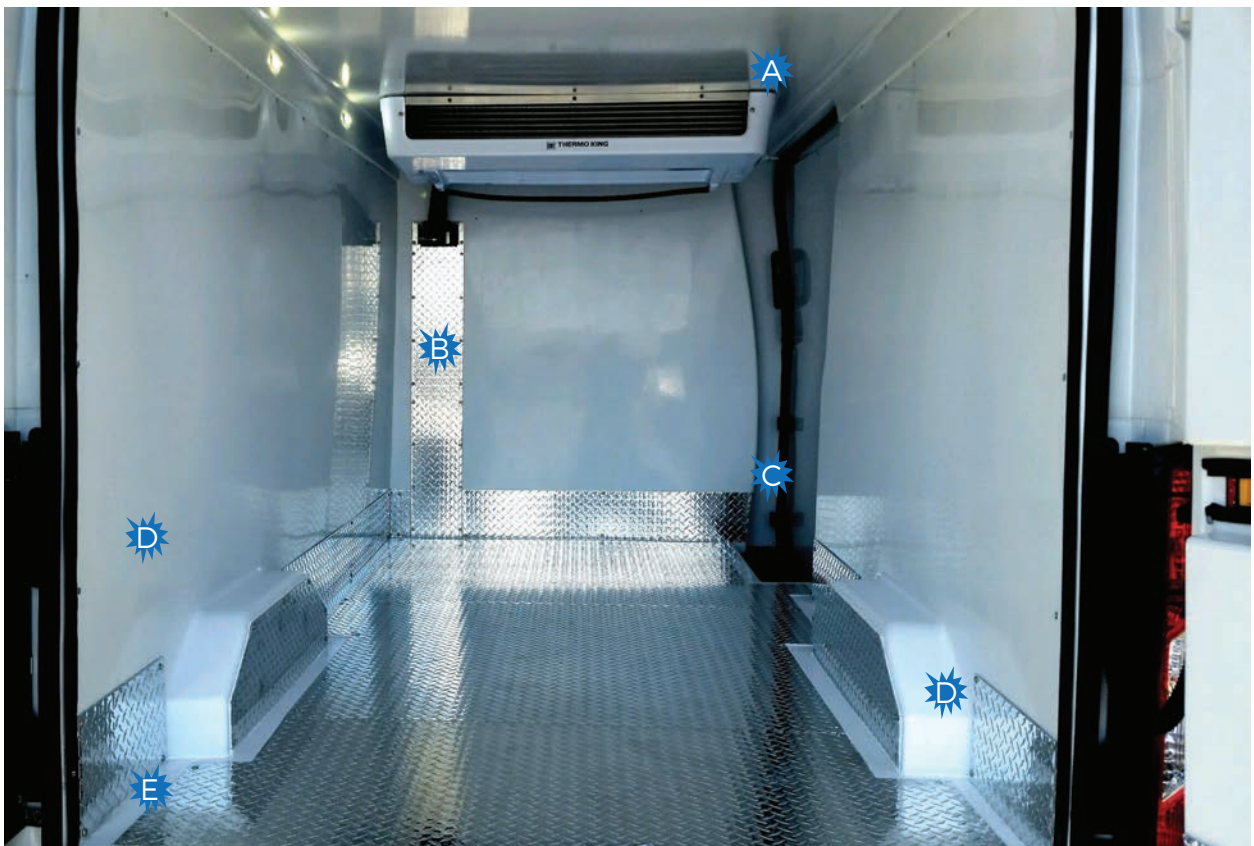
Fresh

Available for: Ford Transit, Chevy City Express, Mercedes/Freightliner Sprinter, Nissan Cargo, Dodge Promaster



Ford Transit Refrigerated Insulation Kit

Thermo King West, Inc. and Thermo King Chesapeake, Inc. are a dedicated team of professionals who take pride in bringing our customers the best parts, accessories and service. We have a rock solid reputation of providing excellent customer satisfaction. Our dedicated sales and parts teams are here to assist you in determining exactly what you need to help ensure your product reaches your destination in impeccable condition.



- A** Structure molded into the roof for ease of evaporator mounting
- B** A/C hoses countersunk into bulkhead
- C** Bulkhead has less interference into load area
- D** Seamless sidewall design with integrated wheel wells
- E** One piece bathtub floor design, no welding of floor



Fresh Available for: Ford Transit



Direct Drive Units

A complete line of refrigeration units for a wide variety of vehicle chassis and applications.



V-200/V-300

The V-200 and V-300 vehicle powered units deliver day-in and day-out cooling performance for small vans or compartmental applications. Both systems use an engine-mounted compressor (TK-13 and TK-15 respectively) and are available in MAX configurations for higher capacity needs or frozen goods.

V-200/V-300 FEATURES INCLUDE:

- SmartPower electric standby option (115 or 230 VAC)
- Automatic hot gas defrost
- Optional heating package (hot gas or coolant heat)
- Jet Lube compressor lubrication
- Jet Cool compressor injection cooling (MAX units)
- DSR controller
- R-134a or R-404a (MAX) refrigerants
- 12VDC
- Lightweight construction





V-520RT (Nosemount)



V-520 (Rooftop)



V-520 NOSEMOUNT AND ROOFTOP

The V-520 provides superior cooling performance in two different packages: nosemount and rooftop. The nosemount unit is ideal for medium size box trucks, while the rooftop arrangement is perfect for large vans and body-onchassis vehicles with reach-in side compartments. Only Thermo King offers a unit with this much capacity in a slim line package (just 6 inches above the roof for non-standby units).

Both units use an engine-mounted TK-16 compressor or optional TK-312 reciprocating compressor. Refrigerant R-404a is available for MAX and SPECTRUM units for frozen and multi-temp applications, while R-134a is available for fresh applications.

V-520 FEATURES INCLUDE:

- SmartPower electric standby option (230 VAC)
- Automatic hot gas defrost
- Optional heating package (hot gas, MAX units)
- Jet Lube compressor lubrication
- Jet Cool compressor injection cooling (MAX units)
- DSR controller
- 12VDC
- 24VDC (non-standby units only)
- Lightweight construction
- Very long life condenser fans



COLDTAINER

Refrigerated Containers for Professional Mobile Refrigeration

Over time we have integrated our product range of refrigerated containers, with solutions for temperature controlled professional mobile refrigeration, to ensure a comprehensive offer able to meet any demand from our customers.

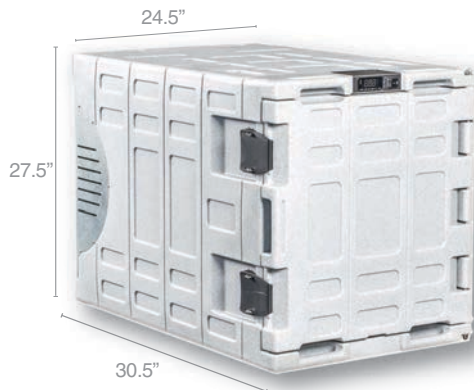


- Temperature Range: -13°F to 88°F
- Accurate and reliable temperature control
- 12v operation tied to vehicle battery, or power converter for 110v operation
- Optional solar panel
- Wire Shelf and Strip Curtains (in the 190 only)
- Sturdy container and door manufactured as a single piece by rotational molding. Material is food grade and UV resistant. Ultra thick insulation constructed of polyurethane foam. Designed for easy cleaning and disinfection.
- Can easily be moved or transferred from one application to another

The best alternative to insulated vans and an excellent solution for freight & frozen transport

Hot Shot Delivery - Home/Business Delivery - Sales/Demonstration Vehicle - Specialty Distribution - Catering - Seafood - Floral Produce - Medical - Fresh and Frozen Meats - Dairy Products - Fruits and Vegetables - Deli Products and Sandwiches

37 Gallon



Interior: 16.75 W x 20.5 H x 23 D

Weight: 125 lbs

190 Gallon



Interior: 33.5 W x 30.5 H x 38.5 D

Weight: 337 lbs



Fresh to Frozen



Versatile Vehicle Applications

Pharmaceutical Delivery



Medical Courier Services

Multi-Temp for Catering Events



Converted Passenger Van

Vending Distribution



IsoChem Solution on Ford Transit Connect



Fully Integrated Cargo Isolation System



Isolated cargo space reduces odors and vapors from entering occupant compartment

Ideal for applications including:

- Pest Control
- Chemical Transport
- Pharmaceutical Transport



STANDARD EQUIPMENT

- Modular, insulated fiberglass panels
- Non-slip floor
- Fully insulated doors
- Floor drain
- Interior lighting (LED ceiling light)

PRODUCT FEATURES

- Modular kit assembly for high volume upfits
- Isolated cargo space reduces odors and vapors from entering occupant compartment
- Fiberglass panels are leak-free and easy to clean
- Available for freight re-entry

SPECIFICATIONS

	Wheelwell Width	Inner Length	Inner Width	Inner Height	Cargo Area Volume
SWB	42.5"	60.3"	48.5"	43.4"	65.7 cubic ft.
LWB	42.5"	74"	48.5"	43.4"	82.3 cubic ft.



Available on these vehicles:



*Ford Transit Connect



*Nissan NV200



*Ram ProMaster City

OPTIONS



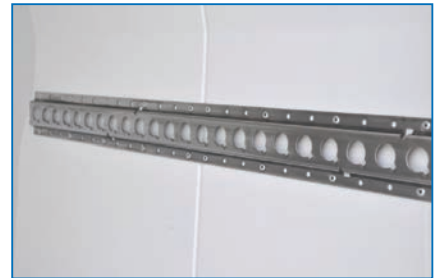
- Single or double intermediate floor
- Additional door seal for isolated cargo area (standard)



- Optional side shelving



- Stainless steel edge protection
- Floor drain (standard)



- Side wall lashing rails



Auxiliary HVAC

Standard Tie-in and Stand Alone • Extreme Climate System

Standard Tie-in HVAC | London

The London is a low profile, rear heating and cooling unit that is installed at rear headliner with conditioned air delivered forward into the cargo space. The placement of the London offers convenience and occupies minimal space.

Vehicle Integration - Cooling

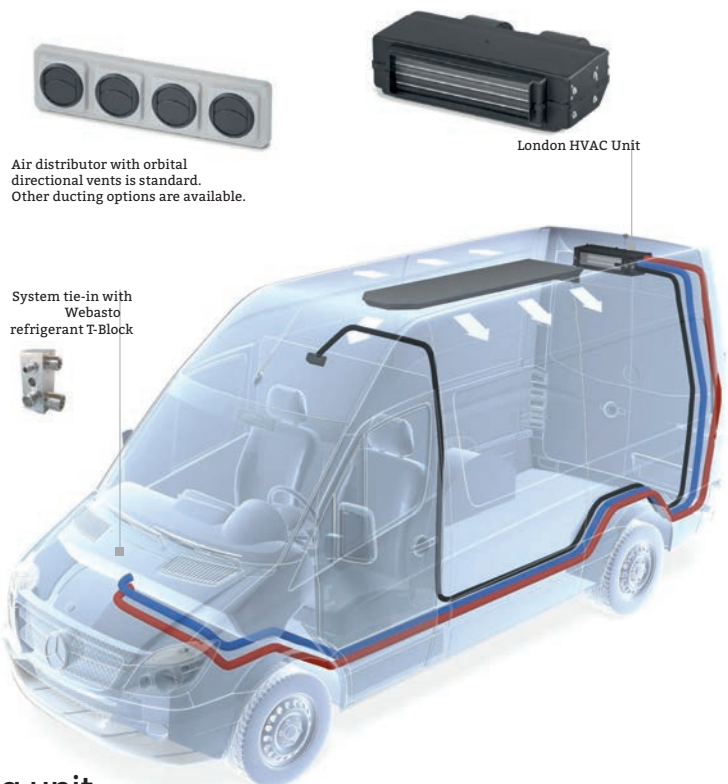
The London HVAC is tied into the Ford Transit OEM front HVAC for cooling and utilizes the vehicle's existing in-line condenser and compressor.

Vehicle Integration - Heating

Heating is achieved by plumbing the London's hot water heater core to the vehicle's engine coolant loop. Hot water flow is controlled by Webasto hot water valve and auxiliary pump.

Product Features:

- High capacity headliner heating and cooling unit
- Low profile to occupy minimal space
- 12 Volt (or 24 Volt models available upon request)
- Variable temperature control
- Hot water heating and cooling functions
- Operation from one single controller



Extreme Climate Stand Alone HVAC

For applications that require maximum cooling capacity, the Extreme Climate Stand Alone HVAC has rear headliner mounted higher capacity Kiev, auxiliary engine driven compressor and a roof mounted, low-profile condenser (Valencia) and optional under chassis HTC condenser.

Vehicle Integration - Cooling

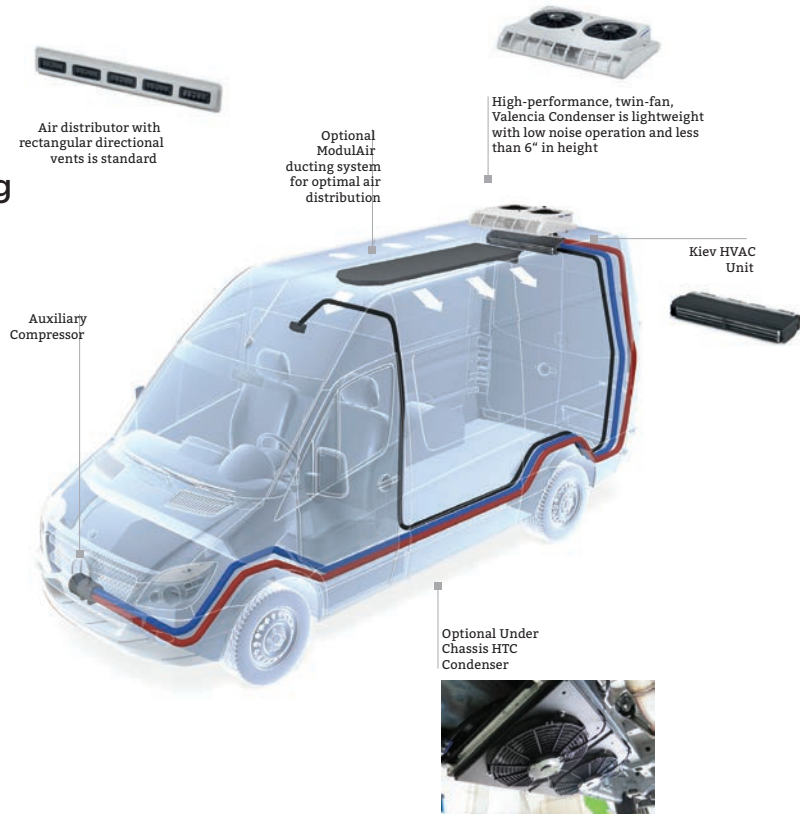
Kiev rear HVAC is integrated with independent refrigerant loop consisting of auxiliary compressor, roof mounted Valencia condenser or under chassis HTC condenser.

Vehicle Integration - Heating

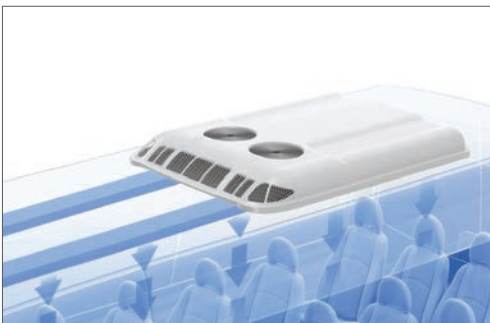
Heating integration and function is identical to Standard Tie-in Rear HVAC.

Product Features:

- High capacity, horizontal heating and cooling unit
- 12 Volt (or 24 Volt models available upon request)
- Anti-Freeze Sensor
- Variable temperature control



Additional HVAC Configurations | Madrid Rooftop HVAC



53,000 BTU/h | 1,236 cfm



Heating Solutions

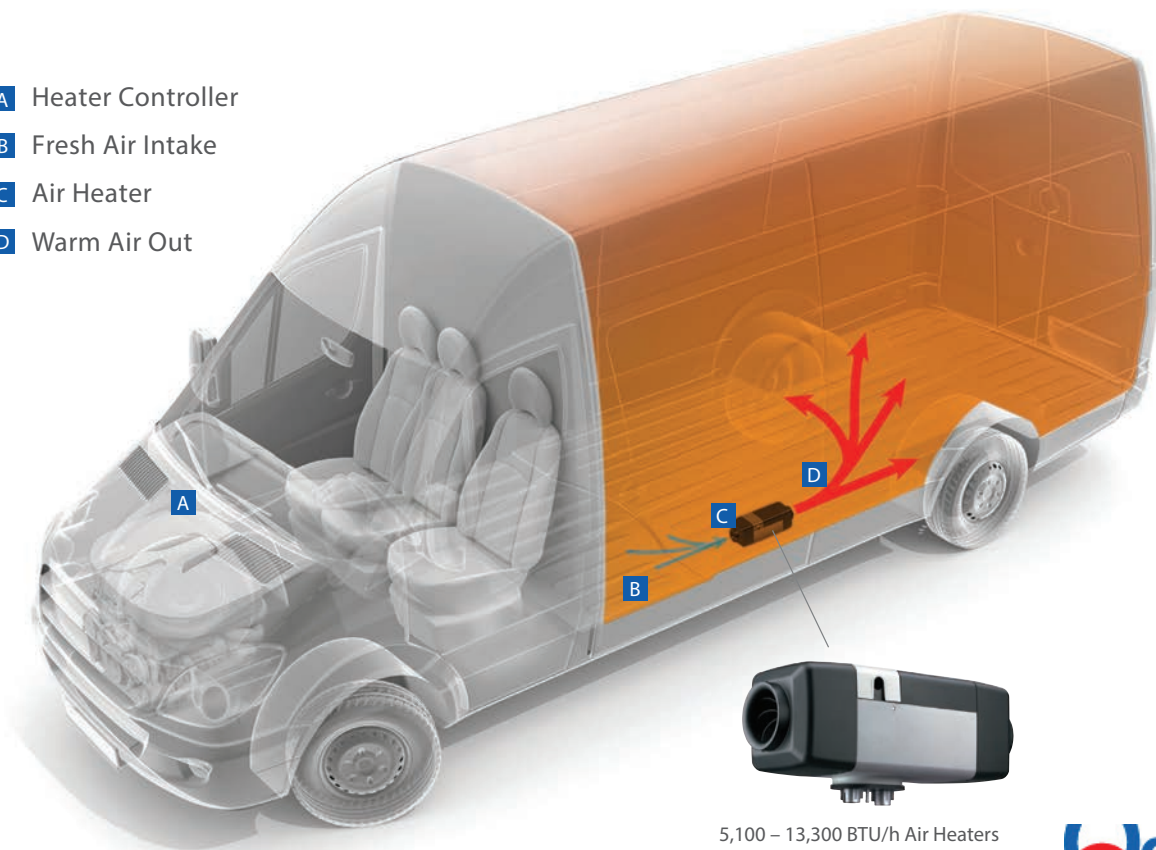
Interior and Exterior-Mounted

Interior Heating Solutions

Webasto air heaters provide heat for the occupants and cargo in a work van. The air heater operates independently from the gas or diesel engine which means you can heat the interior without idling the van. The heater can be controlled using a rheostat, an optional Evo multi-functional MC05 control, or an optional SmartTemp controller.

The heater is compact enough to fit inside the van, under utility shelves or other structures. The air heater can be programmed to maintain cargo temperature, eliminating the need to unload the vehicle after the work shift, saving time and money. The air heater can also be set to begin operation prior to the work shift, providing a pre-heated and work-ready vehicle.

- A** Heater Controller
- B** Fresh Air Intake
- C** Air Heater
- D** Warm Air Out



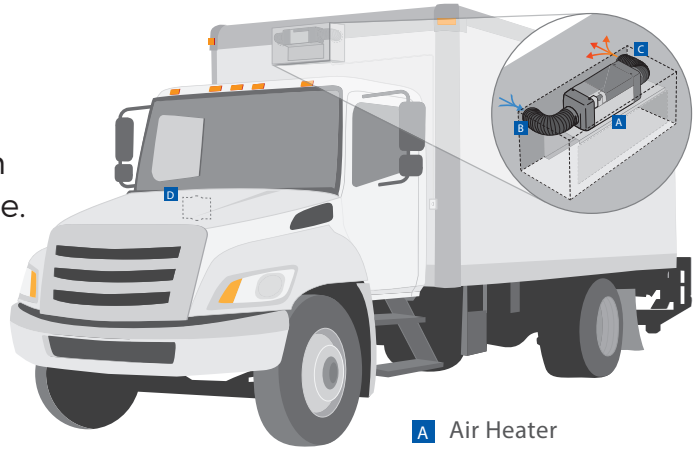
5,100 – 13,300 BTU/h Air Heaters

Webasto
Feel the Drive

Exterior-Mounted Heating Solutions

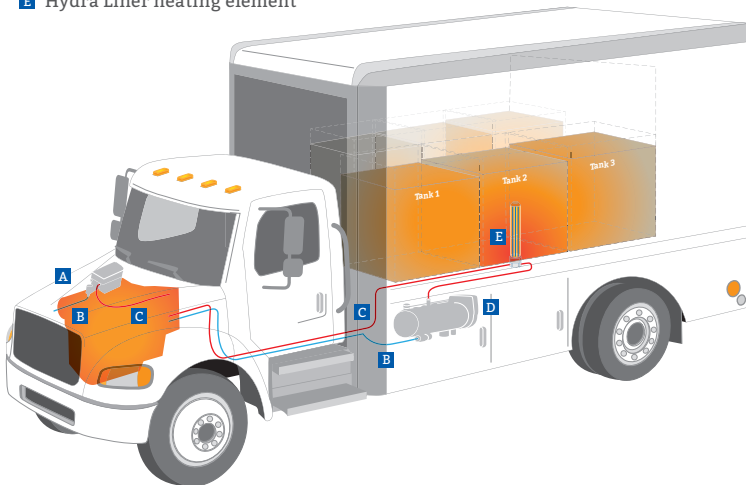
Webasto air heaters provide consistent heat for interior cargo spaces in a work truck. The air heater operates independently from the gas or diesel engine which means you can heat the cargo space without idling the engine.

This exterior cargo heater is conveniently mounted outside the cargo area and can be set to maintain consistent cargo temperature. Webasto heaters are ideal for long heating periods for parked vehicles and for use during work shifts. This is an economical solution to protecting your cargo from freezing with the added benefits of fuel savings and reduced emissions.



- A** Air Heater
- B** Fresh Air Intake
- C** Warm Air Out
- D** Heater Controller

- A** Thermo Top C Coolant Heater
- B** Coolant Intake
- C** Heated Coolant Out
- D** Thermo Pro 90 Coolant Heater
- E** Hydra Liner heating element



Webasto Coolant Heaters available for gas or diesel engines:
 Thermo Top C - 8,600-17,200 BTU/hr
 Thermo Pro 90 - 31,000 BTU/hr

Hydraulic Warming

Webasto's coolant heaters provide heat for many work truck applications. By heating the engine coolant and circulating it, the vehicles engine can be preheated prior to starting the engine. This saves time and money by readying the vehicle for the days duties before the operator arrives. Additionally, Webasto coolant heater can be used in conjunction with the Hydra Liner from Arctic Fox to keep transported fluids at temperature. In the image below the coolant heater and Hydra Liner are used to keep the fluids warm in a mobile lube truck. The Hydra Liner is installed in the center tank and the heat is distributed to adjacent tanks, keeping all fluids above freezing ready to use.



Warehousing

Re-think, Re-purpose, Re-Configure with InsulWall®

InsulWall is an insulated, flexible curtain wall system that effectively zones temperature and space. An alternative to permanent walls and insulated metal panel systems, InsulWall is custom engineered to each unique application.

InsulWall is quickly becoming the space zoning solution in facilities and warehouses across the country. Here's why -

Economical

InsulWall is a competitively priced alternative to a permanent wall system and installs in a matter of days with minimal business interruption.

Flexible

Should business needs change, InsulWall can be easily re-configured with little to no additional infrastructure investment.

Excellent Thermal Performance

With R-values ranging from R3 - R15, InsulWall can meet most thermal specifications with ease.

Easy Installation

InsulWall's modular design and thin profile of 1"-2" minimizes facility footprint while maximizing temperature zoning capabilities. InsulWall fits neatly into irregularly shaped areas and can be easily cut for convenient on-site fabrication.



More Flexibility. Less Overhead. Greater Energy Conservation. Increased Product Integrity.

InsulWall is a wall system solution that optimizes your space – across numerous businesses:

3PL • Food Processing • Airports • Hospitals • Data Centers
Manufacturing • Food & Beverage Distribution • Warehouse Facilities

The applications for InsulWall are endless. Whether you are zoning temperature and space to store food products or controlling temperature and humidity in your data center, InsulWall's unique thermal properties and modularity make it a wall solution that can easily and quickly support your business requirements.

Please call our sales team to discuss your unique space and temperature zoning needs; we are confident you will see how InsulWall can positively impact your business.

InsulWall is the contemporary solution for your temperature and space zoning needs.



The Challenge:

Retrofit a 166,000 square foot warehouse space into 3 distinct temperature zones in a matter of days.

The Solution:

InsulWall – an insulated, flexible curtain wall system that is modular, flexible and installs with ease.

**R RANDALL
WAREHOUSE**

A Safe Fleet Brand

Specialized Upfitters

SancoServices.net

Keep your produce fresh



The Solution:

Agility in creating temp-controlled warehouse space for seasonal produce

The Solution:

Created a 18,700 square foot cooler room with additional panels for an employee access area

Create a cooler room within your warehouse



Use adaptable walls to create storage areas



The Solution:

Created a 9,000 square foot temperature-controlled storage room within a leased space

Reduce, dampen or absorb sound



Increase energy efficiency in your data center

INSTALLATIONS

Let Sanco Services install equipment on-site giving you the best ROI, better and faster than anyone in the industry! We can provide consistent implementation of your equipment across your fleet regardless of terminal and asset locations.

Sanco Services will come to you wherever you are and expertly install the exact equipment you need. Why be limited to dealership hours and locations when you can save time and money with Sanco Services?

Best of all, our inventory is not brand specific, so we're not tied down to offering you just one line of equipment. We can install any brand and accessories you have partnered with.

New Installations • Pre-owned Installations • Removals • Transfers

Auxiliary Power Units



Aerodynamic Trailer Skirts



Solar Panels



Telematics



CATERING | WEDDINGS | FAMILY REUNIONS | FUNDRAISERS | GRADUATIONS | GRAND OPENINGS | FAIRS | PICNICS

Trailer Rentals

- 12-foot insulated trailer
- Swing doors for easy loading and unloading
- Reefer unit capable of cooling to 10°F
- All electric refrigeration unit, requires at least a 30-amp circuit
- Generator rental available if electricity is not an option



Van Rentals

- Swing doors and a side door for easy loading and unloading
- Reefer unit capable of cooling or heating
- Electric stand-by power that allows you to plug in and run the reefer unit without wasting fuel - requires a 30-amp circuit

Box Truck Rentals

- 26-foot refrigerated straight truck
- Swing doors with lift gate or ramp for easy loading and unloading
- Reefer unit capable of freezing down to 0°F keeps your valuable cargo continuously cool
- CDL and health card may be required
- Delivery and pickup is available



Hot Shot Delivery - Home/Business Delivery - Sales/Demonstration Vehicle - Specialty Distribution - Catering - Seafood - Floral - Produce
Medical - Fresh and Frozen Meats - Dairy Products - Fruits and Vegetables - Deli Products and Sandwiches

Stay on track, stay on schedule and stay cool.

Call 844-75COOLER to get a lease quote or to reserve your refrigerated rental today.